

MARTHA O'BRYAN FAMILY RESOURCE CENTER

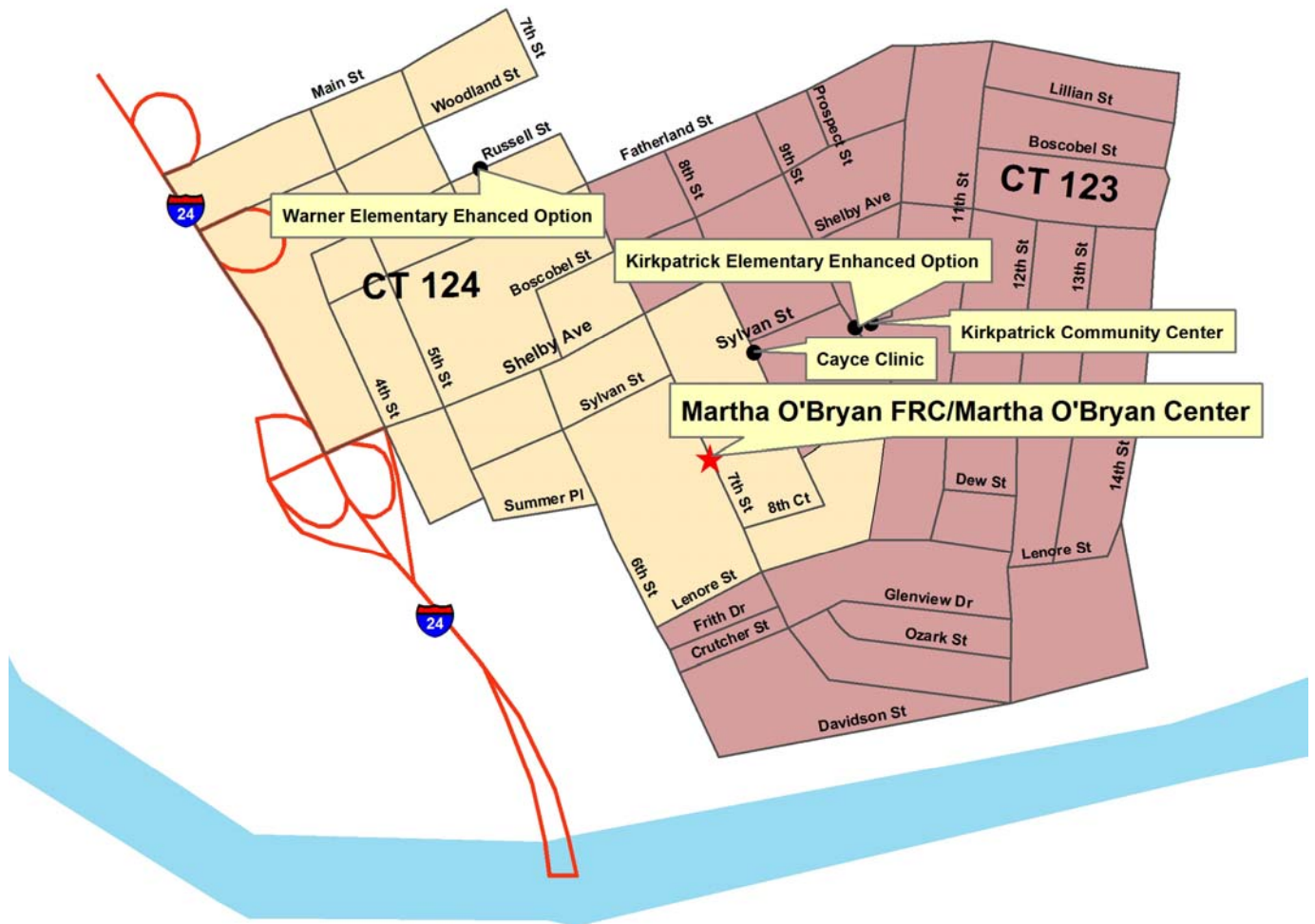
711 South 7th Street
Nashville, Tennessee 37206
(615) 254-1791

Measures for Community Goals

Service Area: Martha O'Bryan Family Resource Center (FRC) is located at 711 South 7th Street at the Martha O'Bryan Center. Martha O'Bryan FRC serves the East Nashville community and is located in the heart of James A. Cayce Homes. Martha O'Bryan Center serves as the lead agency for the Cayce FRC.

The FRC service area includes census tracts 123 and 124. The area includes 4th Street, 5th Street, part of Fatherland Street, Shelby Avenue, 9th Street, Sevier Street, 12th Street, and Davidson Street. The Martha O'Bryan FRC service area appears on the map below.

Martha O'Bryan Family Resource Center Service Area



History: The Martha O'Bryan (formerly Cayce, and referred to until name change in 2007) Family Resource Center (FRC) was founded in September 1993 with the Martha O'Bryan Center wanting to expand services for Cayce residents. In July 1995 a family resource center grant for a Schools Liaison position from the state was received. The function of this position was to build stronger relationships with neighborhood elementary schools: Kirkpatrick, Lockeland, and Warner.

In 1996 the United Way SUCCESS BY 6 initiative was instrumental in securing dollars from the Kraft Foundation to finance the Parent Empowerment Program at the Cayce FRC. To meet the mental health needs of the community, DeDe Wallace placed two case managers and one therapist on-site at the Cayce FRC in July 1997.

In April 1998, Cayce FRC and Martha O'Bryan services moved into a new building. In the spring of 1999, Cayce FRC received United Way Outcome Based Funding to incorporate Family Literacy. Based on a series of community action planning meetings held in January 2000, the Cayce FRC made the decision to expand in order to further meet the needs of children and families.

In 2007, the decision was made to change the name from Cayce to Martha O'Bryan Family Resource Center. The Martha O'Bryan FRC is a partnership of public and private organizations delivering convenient, comprehensive, and efficient services to meet the changing needs of families in the James A. Cayce Homes and the surrounding East Nashville Community.

Top priority goals for Martha O'Bryan FRC are "Children are Succeeding in School" and "Families and Children are Safe."

FRC Partners:

The Martha O'Bryan Center serves as the lead agency for the Martha O'Bryan FRC. Additional partner agencies include:

Alcohol and Drug Council of Middle TN
Bailey Middle School
United Neighborhood Health Services: Cayce Family Health Center
Cayce Community Resident Association
Centerstone Mental Health Center
Communication Workers of America-Cayce Learning Center
Dalewood Middle School
Department of Human Services
Exchange Club
Family & Children's Service

Girl Scout Council
Kids on the Block
Kirkpatrick Elementary School
Metropolitan Development and Housing Authority
Metropolitan Social Services
Nashville Prevention Partnership
Stratford High School
Tennessee Department of Education
United Way of Metropolitan Nashville
Village Church

NOTES RELATED TO CRIME DATA:

Crime reports were provided by Neighborhoods Resource Center using Metropolitan Nashville Police Department 2005, 2006, and 2007 Crime Incident Databases and United States Census Bureau "Census of Population and Housing, 2000 (Tennessee)."

Crime charts for 2005-2008 crimes against persons include Robbery rather than Offense Against the Family category due to extremely low incident rates for the latter. Due to the variation in crime data provided by Metropolitan Nashville Police Department for 2005-2008, trend comparisons are not possible with previous years. Therefore, crime charts for 2002-2005 years that utilized previously "reported" crime data appear in the Appendix for those Family Resource Centers that requested data during these years.

Crime Rate

The crime rate is the number of crimes per thousand persons.

Crime Incidents

Crime incidents refer to events in which a crime took place, a victim reported the crime, and an incident report was filed by a police officer. Multiple incidents may be filed by a single victim.

Restrictions

In 2008, the Metropolitan Nashville Police Department stopped providing public access to crime incident data for open investigations. Therefore, the tables summarize only those crime incidents that have been cleared by arrest, or cases in which prosecution was declined, or the victim refused to cooperate.

Goal: Families and Children are Safe

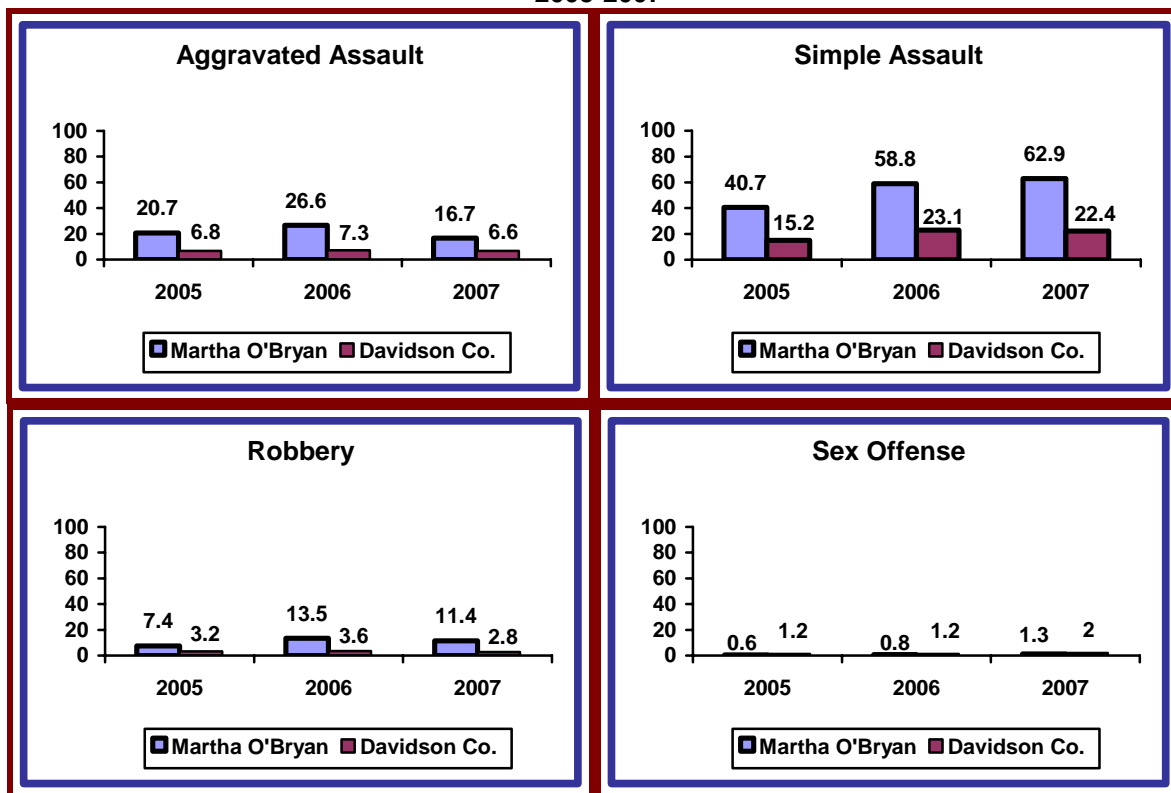
Measure: Crime incidents refer to events in which a crime took place, a victim reported the crime, and an incident report was filed by a police officer.

Description: Crimes against persons include violence against individuals, such as aggravated and simple assault, robbery, and sex offense.

What the data show: From 2006 to 2007 in the Martha O'Bryan area, incidents of aggravated assault and robbery declined while simple assault and sex offense rose. County sex offense incidents were, however, higher in 2007 than those for the Martha O'Bryan area.

Measure implications: Reduction in crime rates is essential to neighborhood safety.

RATES OF CLOSED CRIME INCIDENTS AGAINST PERSONS IN THE MARTHA O'BRYAN AREA 2005-2007



Source: Neighborhoods Resource Center

Goal: Families and Children are Safe

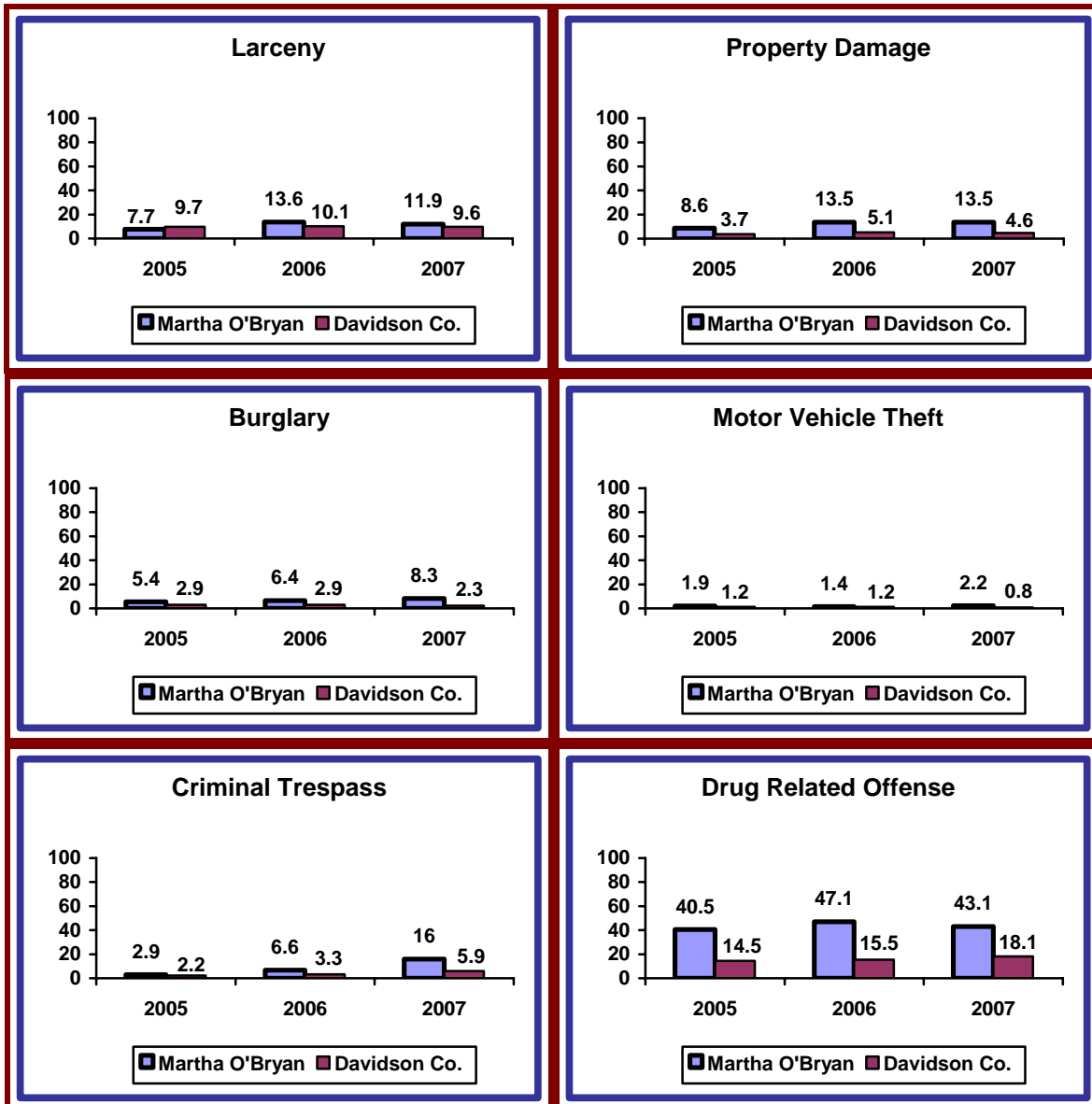
Measure: Crime incidents refer to events in which a crime took place, a victim reported the crime, and an incident report was filed by a police officer.

Description: Property/other crimes include larceny, property damage/vandalism, burglary, motor vehicle theft, harassment/criminal trespass, and drug related offense.

What the data show: Crime incidents in the Martha O'Bryan area for burglary, motor vehicle theft, and criminal trespass categories increased in 2007. The most notable increase in crime incidents in 2007 occurred in the criminal trespass category.

Measure implications: Reduction in crime rates is essential to neighborhood safety.

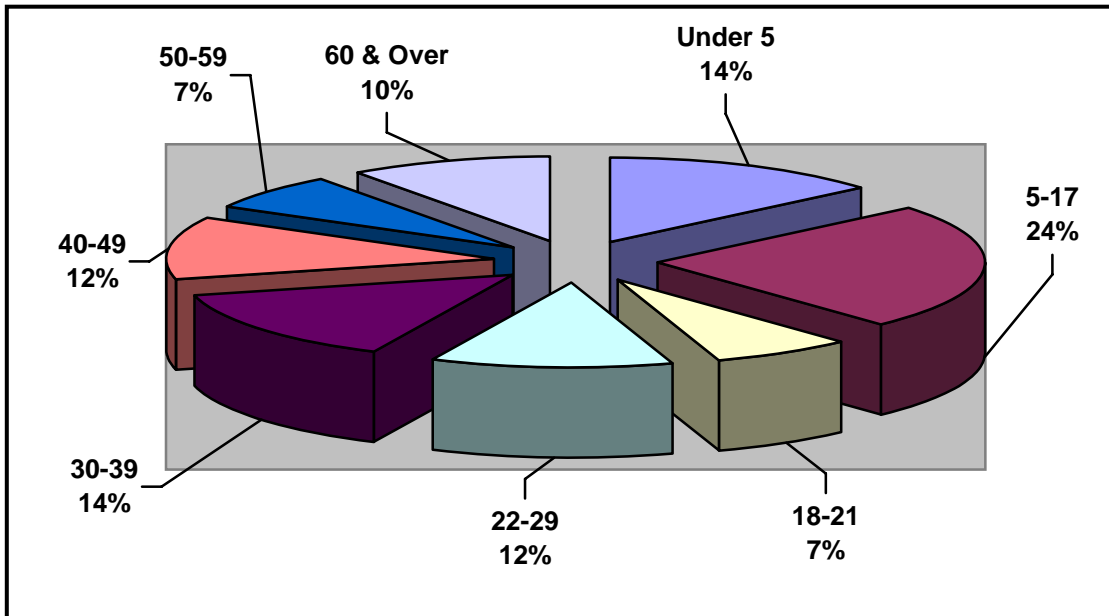
RATES CLOSED CRIME INCIDENTS AGAINST PROPERTY/OTHER IN MARTHA O'BRYAN AREA 2005-2007



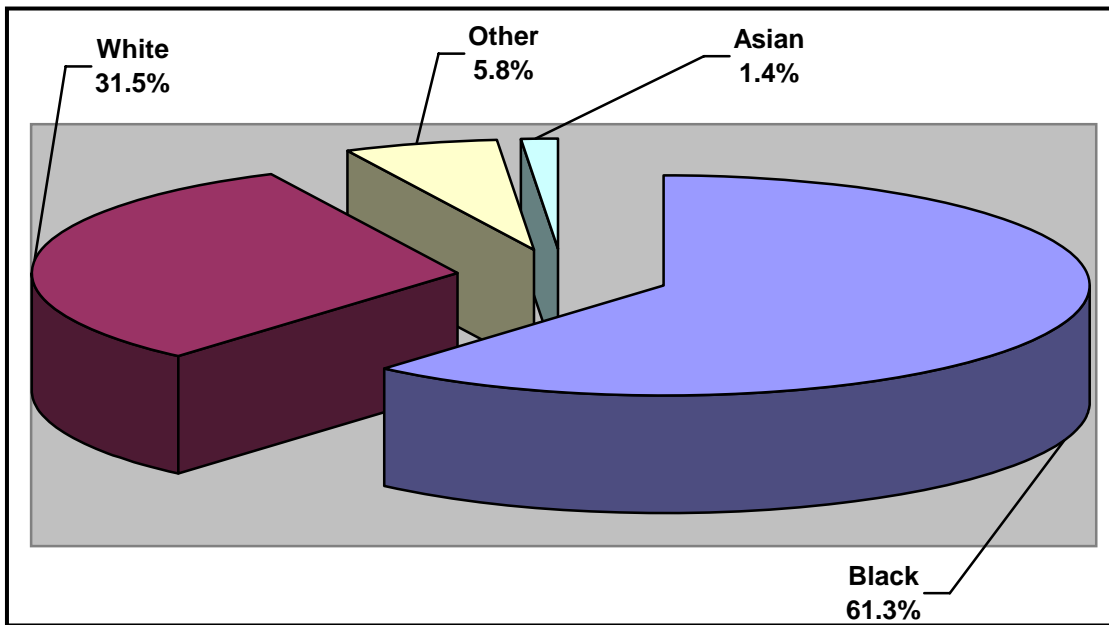
Source: Neighborhoods Resource Center

SELECTED DEMOGRAPHICS: The charts on the following pages provide demographic information for the Martha O'Bryan FRC service area (census tracts 123 and 124).

POPULATION BY AGE

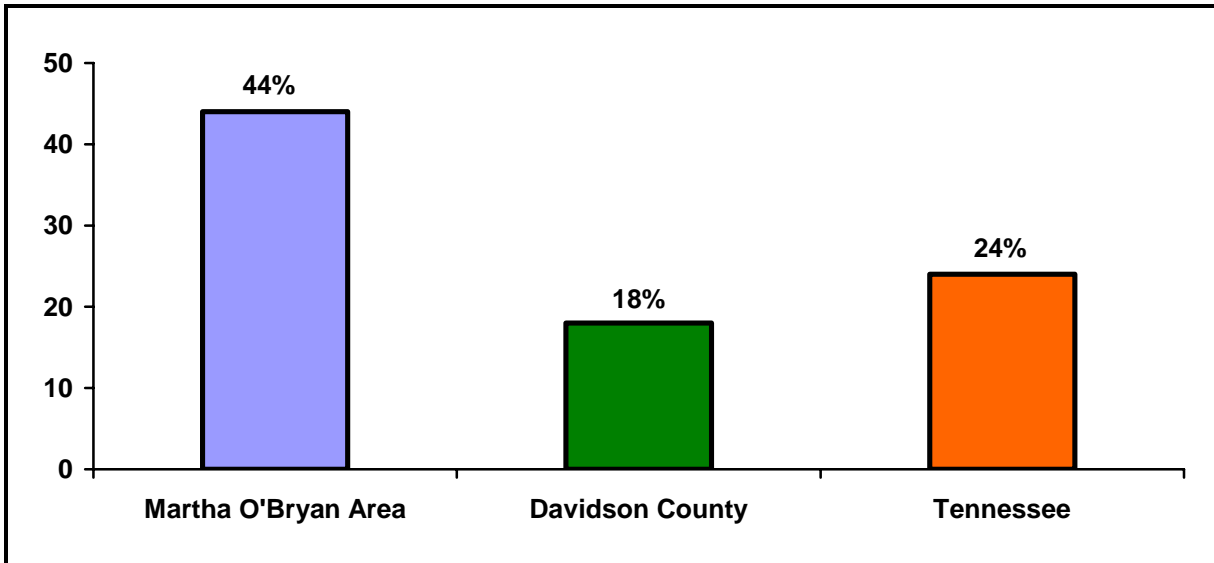


POPULATION BY RACE

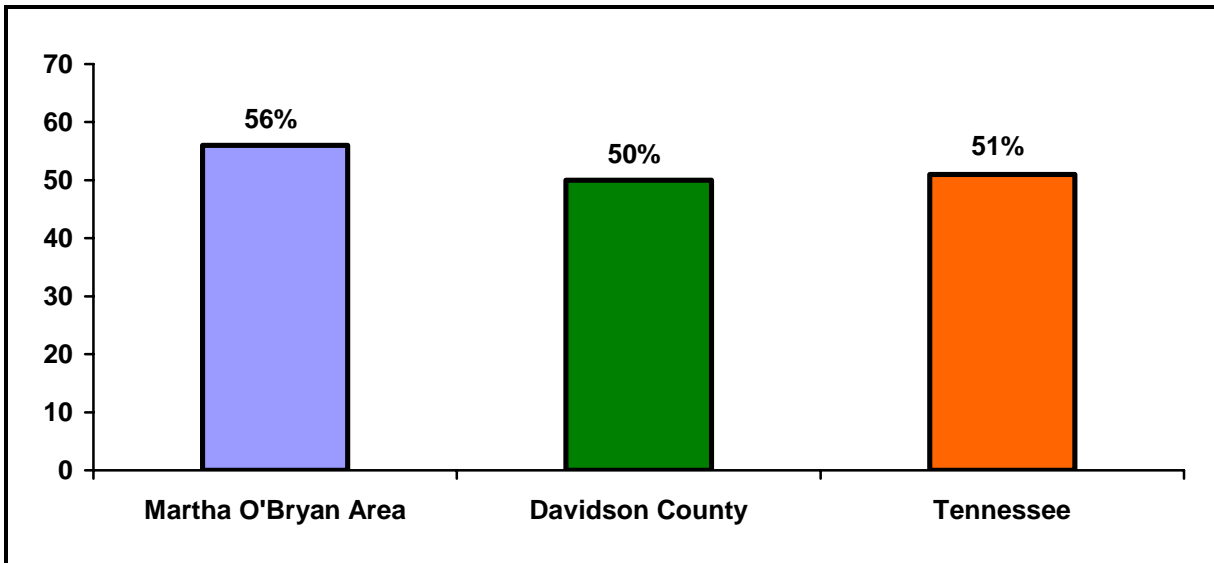


Source: U.S. Census Bureau, Census 2000, Summary File 1

PERCENT OF POPULATION AGE 25+ WITH LESS THAN A HIGH SCHOOL DIPLOMA OR GED

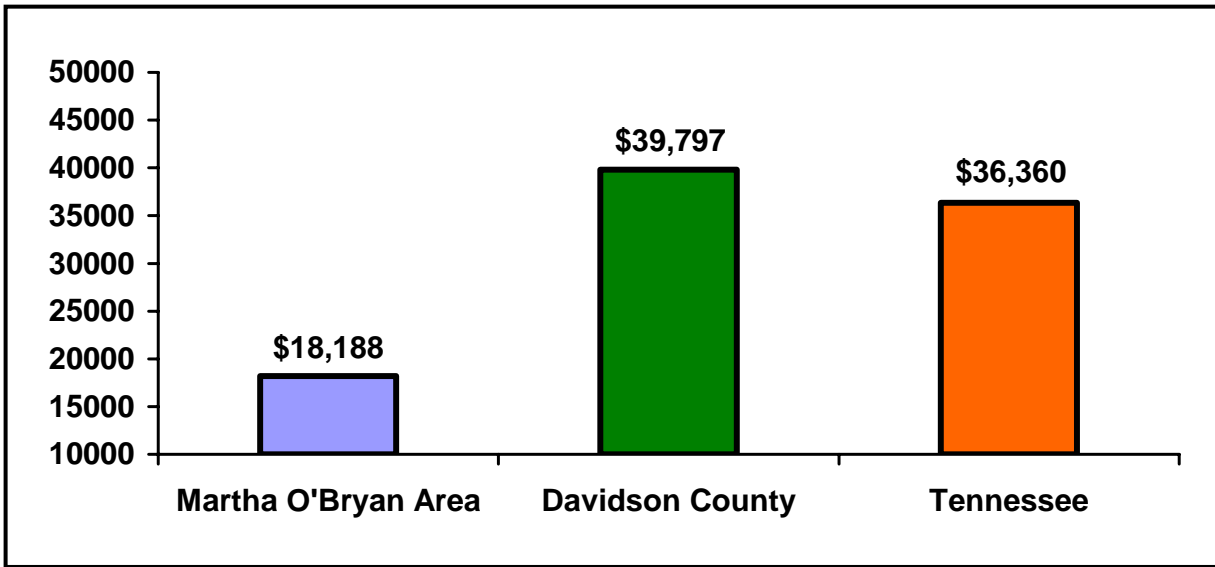


PERCENT OF GRANDPARENTS RESPONSIBLE FOR CARE OF GRANDCHILDREN (< AGE 18) RESIDING IN SAME HOUSEHOLD



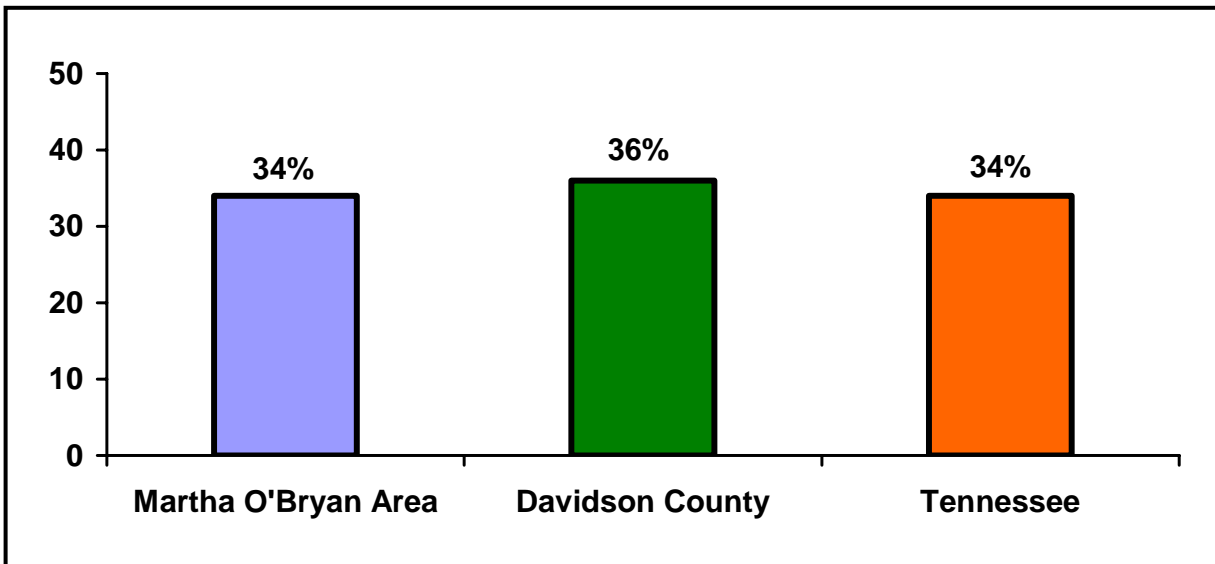
Source: U.S. Census Bureau, Census 2000, Summary File 3 (Table DP-2)

MEDIAN HOUSEHOLD INCOME, 1999



Source: U.S. Census Bureau, Census 2000, Summary File 3 (Table DP-3)

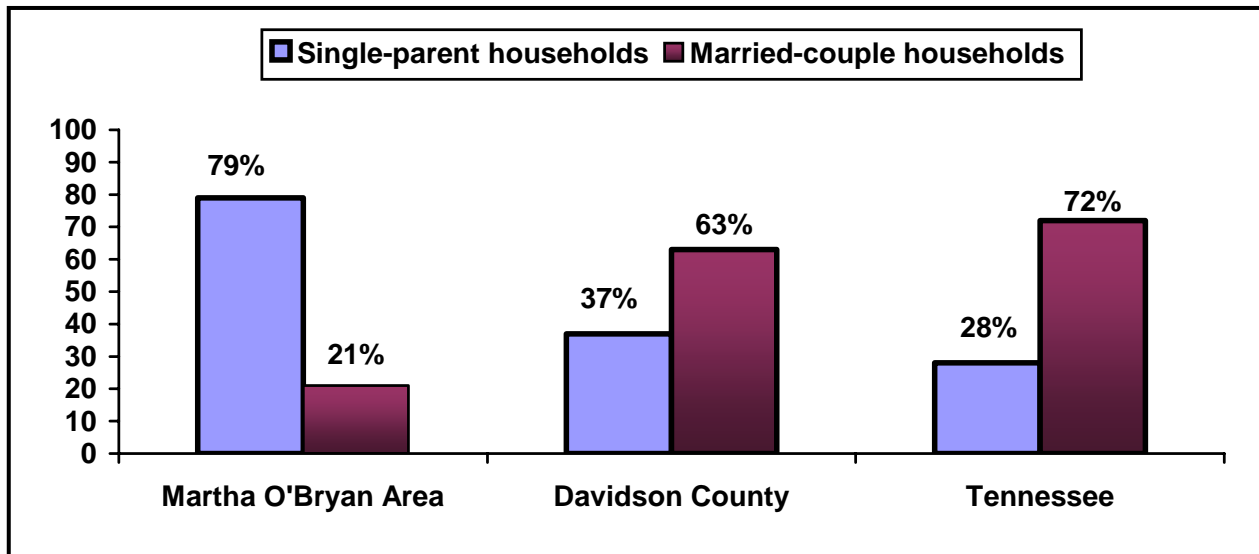
PERCENT OF FAMILIES WITH RENT BURDEN



Source: U.S. Census Bureau, Census 2000, Summary File 3 (Quick Table QT-H13)

Notes: Households that spend more than 30% of their monthly income on rent are considered "rent burdened." Rent-burdened families have less money available for present and future needs.

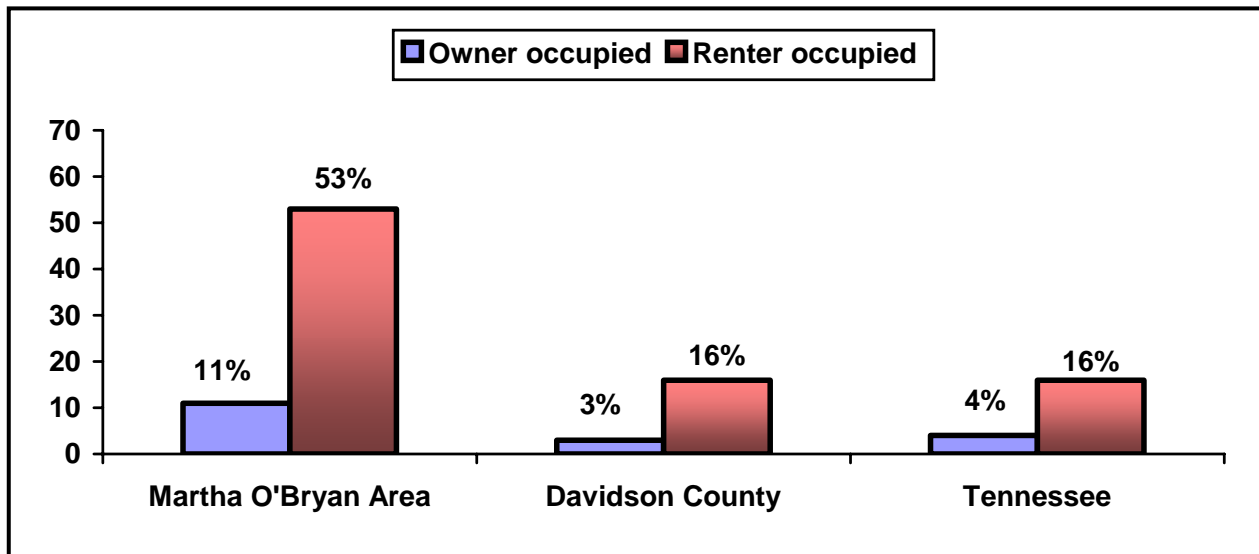
PERCENT OF SINGLE-PARENT AND MARRIED-COUPLE HOUSEHOLDS WITH CHILDREN AGES 18 AND UNDER



Source: U.S. Census Bureau, Census 2000, Summary File 3 (Table P10)

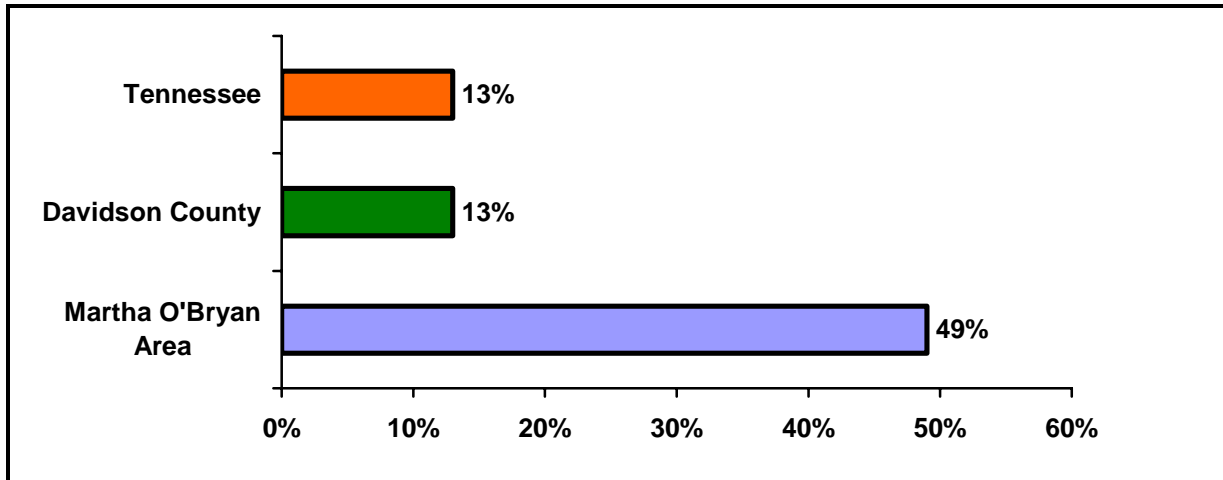
Notes: Children who grow up in single-parent households are more likely to be poor.

PERCENT OF HOUSEHOLDS WITH NO VEHICLES AVAILABLE



Source: U.S. Census Bureau, Census 2000, Summary File 3 (Quick Table QT-H11)

POVERTY RATES, 1999



Source: U. S. Census Bureau, Census 2000, Summary File 3 (Table P87)

EMPLOYMENT STATISTICS

	Martha O'Bryan Service Area	Davidson County	Tennessee
Civilians ages 16 and over in the labor force	2,223	307,250	2,805,234
Percent of total civilian population ages 16 and over unemployed	12%	5.2%	5.5%

Source: U. S. Census Bureau, Census 2000, Summary File 3 (Table DP-3)

APPENDIX

Goal: Families and Children are Safe

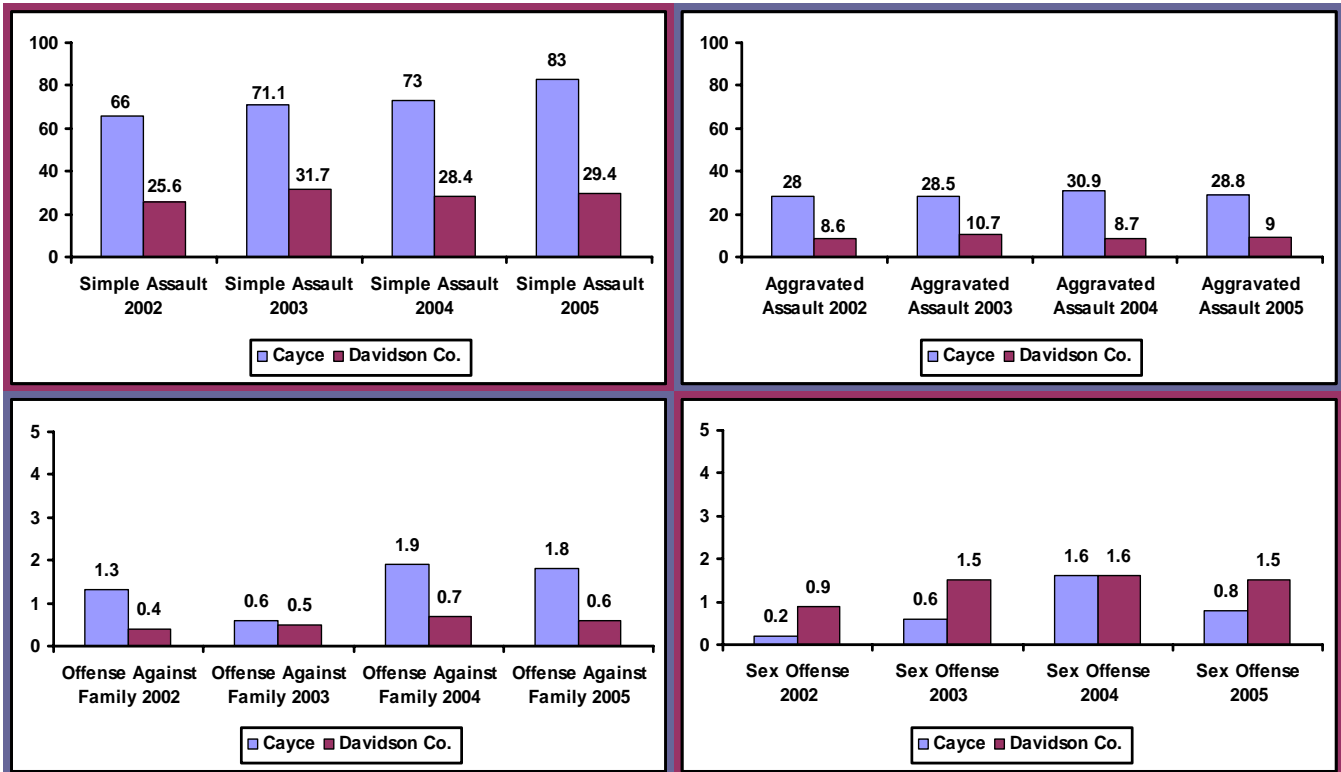
Measure: Rates of reported crimes against persons.

Description: Crimes against persons include aggravated and simple assault, offense against the family, and sex offense. It should be noted that all crimes were the number reported, not necessarily the number that occurred and the same person could have been the victim of one or more crimes.

What the data show: Reported crimes against persons decreased in 2005 for the Cayce area (currently Martha O'Bryan) in the following areas except simple assault. With the exception of sex offense, the rates for the area remained well above the county rates.

Measure implications: Reduction in crime rates is essential to neighborhood safety.

RATES OF REPORTED CRIMES AGAINST PERSONS IN THE CAYCE AREA, 2002-2005



Source: Neighborhoods Resource Center, 2002 and 2003 FRC data recalculated.

Notes: The rate is the number of crimes per 1,000 persons.

Goal: Families and Children are Safe

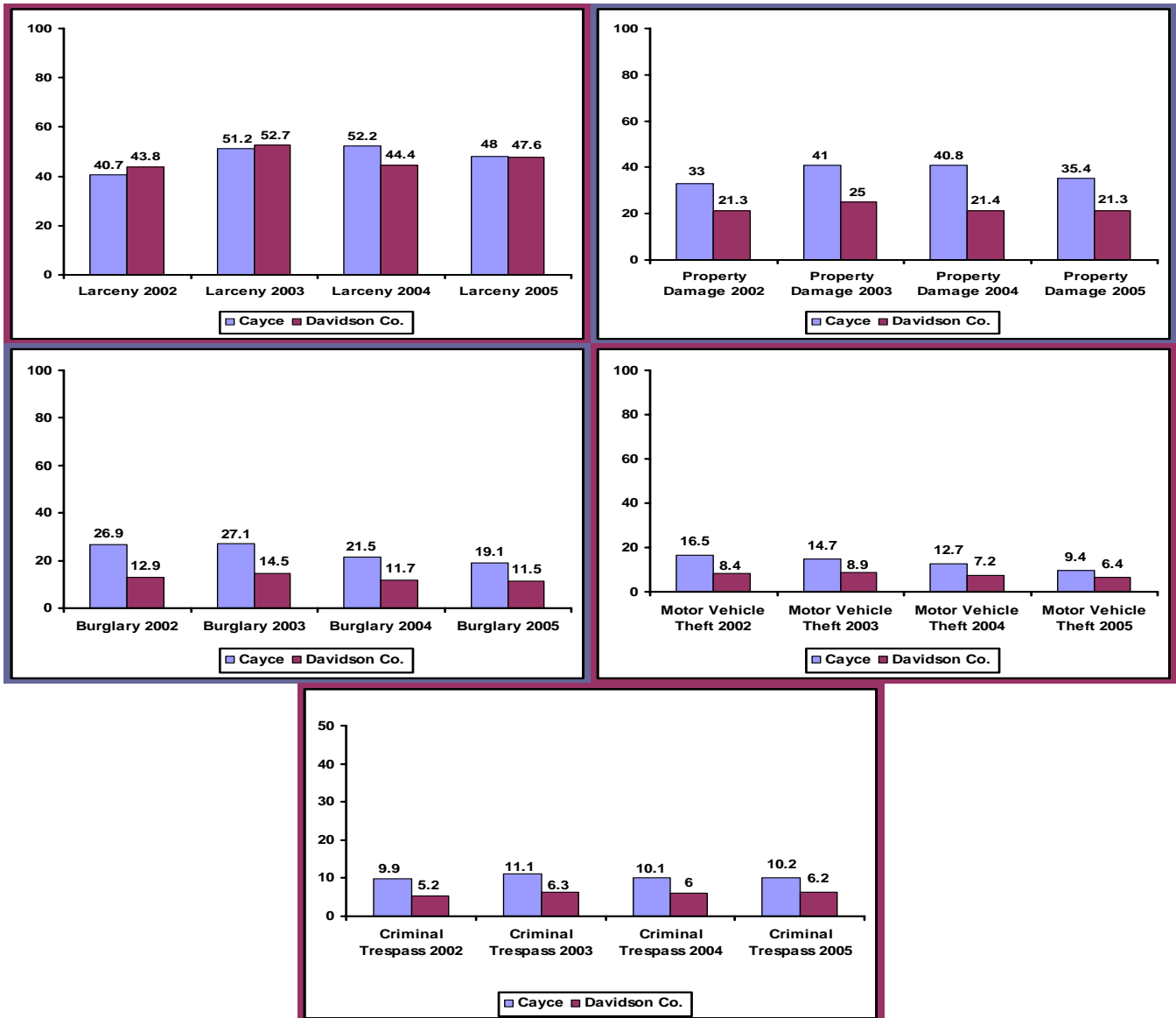
Measure: Rates of reported property crimes.

Description: Property crimes include burglary, harassment/criminal trespass, larceny, motor vehicle theft, and property damage/vandalism. It should be noted that all crimes were the number reported, not necessarily the number that occurred and the same person could have been the victim of one or more crimes.

What the data show: Although larceny, burglary, property damage/vandalism, and motor vehicle crimes reported in the Cayce area (currently Martha O/Bryan) decreased in 2005, most, with the exception of larceny remained well above the county rates for the same period.

Measure implications: Reduction in crime rates is essential to neighborhood safety.

RATES OF REPORTED PROPERTY CRIMES IN THE CAYCE AREA, 2002-2005



Source: Neighborhoods Resource Center, 2002 and 2003 FRC data recalculated.

Notes: The rate is the number of crimes per 1,000 persons.