

ST. LUKE'S FAMILY RESOURCE CENTER

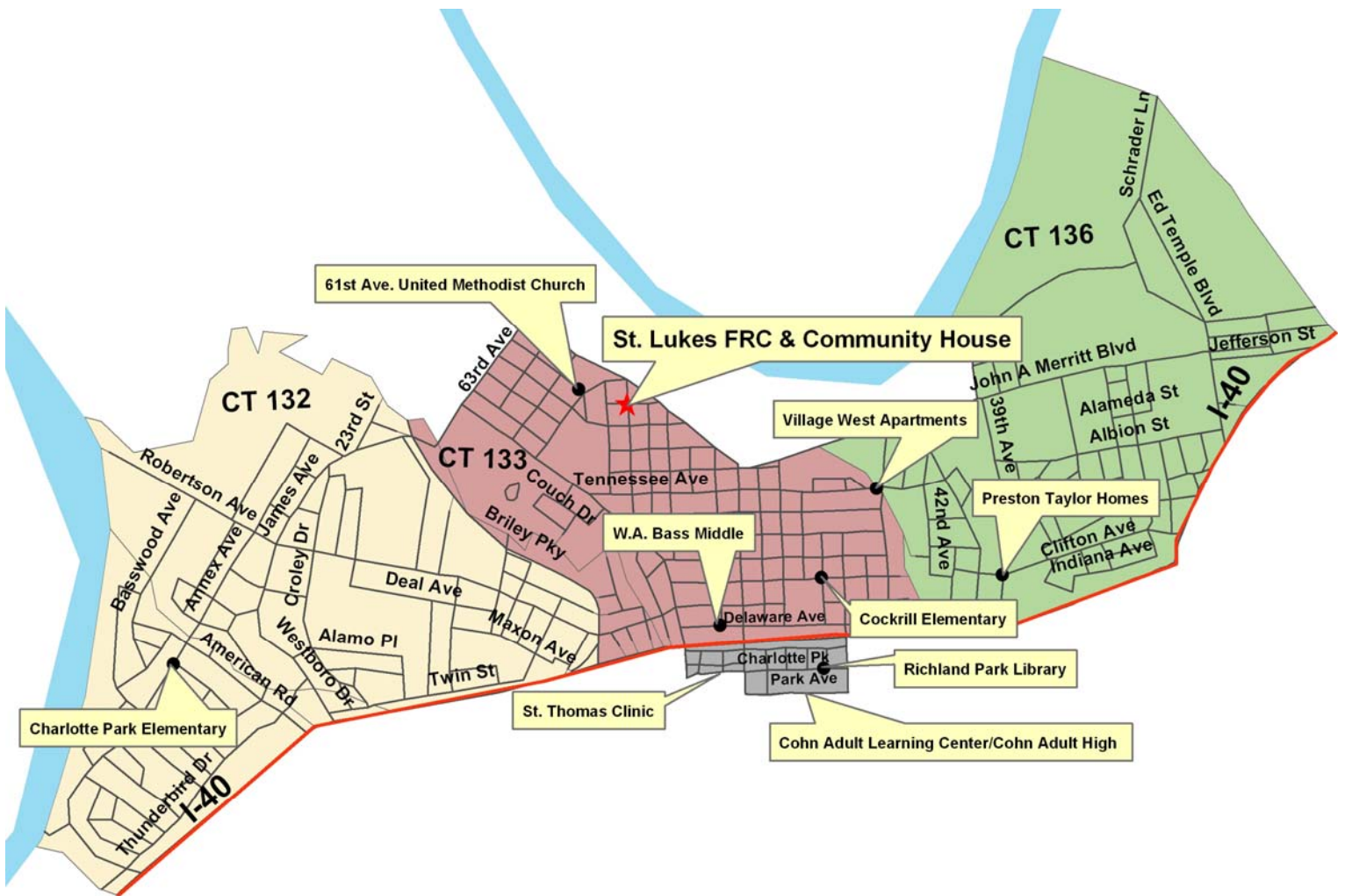
5601 New York Avenue
Nashville, Tennessee 37209
(615) 350-1131

Measures for Community Goals

Service Area: St. Luke's Family Resource Center (FRC) is located at 5601 New York Avenue. The FRC service area comprises census tracts 132, 133 and 136.

The area is bounded by the Cumberland River, Centennial Boulevard, the railroad, and Charlotte Avenue. The St. Luke's FRC service area appears on the map below.

St. Luke's Family Resource Center Service Area



History: St. Luke's Family Resource Center (FRC) began receiving United Way funding in 2001. Located in a mixed-use residential/industrial neighborhood in West Nashville, St. Luke's FRC is near Preston Taylor Homes. St. Luke's Community House is the lead agency for St. Luke's Family Resource Center.

The MISSION of St. Luke's FRC is to help low income, working families in West Nashville achieve their potential and prevent problems that threaten the stability of families and community. The VISION is to see parents, children, youth, seniors, and extended family members develop the inner strength and support to deal with life's challenges and opportunities. The FRC IDENTITY is that of a nonprofit community social service agency, founded in 1913 by the Episcopal Church of Middle Tennessee. The FRC operates as a non-sectarian expression of love, care, and concern in the spirit of Christ's call to serve others. The COMMITMENT is to provide quality services that are appropriate, affordable, and values-based by partnering with staff, volunteers, donors, and community agencies through an integrated service model.

The ethnic make-up of the area remains predominantly white, but according to the 2000 census the area has seen a significant increase in the Asian, Hispanic, and European refugee population. The diversity goes beyond ethnic backgrounds with close to 4,000 seniors residing in the 37209 service area. The average family size is 3.5 with 25% with an income of less than \$10,245, 50% less than \$17,075, and 75% less than \$20,520. This community is primarily made up of single-family homes, duplexes, apartments, etc. Close to half of the housing is owner occupied, providing a more stable community than many areas dealing with poverty. St. Luke's continues to be the major social service agency in the area and offers a variety of services including childcare, mobile meals, emergency food, and before and after school care. These services have been able to grow through the many FRC partner collaborations.

Top priority outcomes for St. Luke's FRC are "Families and Children are Safe" and "Frail Elderly Live in Supportive Communities".

FRC Partners:

The St. Luke's Community House serves as the lead agency for the Family Resource Center. Partner agencies include:

Big Brothers/Big Sisters

Boy Scouts

Domestic Violence Intervention Council

Family and Children Services

First Steps

Girls World

Juvenile Court

Legal Aid

Metro Social Services

Nashville Adult Learning Center

Nashville's Table

Neighborhoods Resource Center

Oasis Center

Opportunities Industrialization Center

Second Harvest

Truth & Reconciliation Project

Vanderbilt Coalition on Healthy Aging

West Nashville Community Development

Partnership

Youth Encouragement Services

Youth Life Learning Center

NOTES RELATED TO CRIME DATA:

Crime reports were provided by Neighborhoods Resource Center using Metropolitan Nashville Police Department 2005, 2006, and 2007 Crime Incident Databases and United States Census Bureau "Census of Population and Housing, 2000 (Tennessee)."

Crime charts for 2005-2008 crimes against persons include Robbery rather than Offense Against the Family category due to extremely low incident rates for the latter. Due to the variation in crime data provided by Metropolitan Nashville Police Department for 2005-2008, trend comparisons are not possible with previous years. Therefore, crime charts for 2002-2005 years that utilized previously "reported" crime data appear in the Appendix for those Family Resource Centers that requested data during these years.

Crime Rate

The crime rate is the number of crimes per thousand persons.

Crime Incidents

Crime incidents refer to events in which a crime took place, a victim reported the crime, and an incident report was filed by a police officer. Multiple incidents may be filed by a single victim.

Restrictions

In 2008, the Metropolitan Nashville Police Department stopped providing public access to crime incident data for open investigations. Therefore, the tables summarize only those crime incidents that have been cleared by arrest, or cases in which prosecution was declined, or the victim refused to cooperate.

Goal: Families and Children are Safe

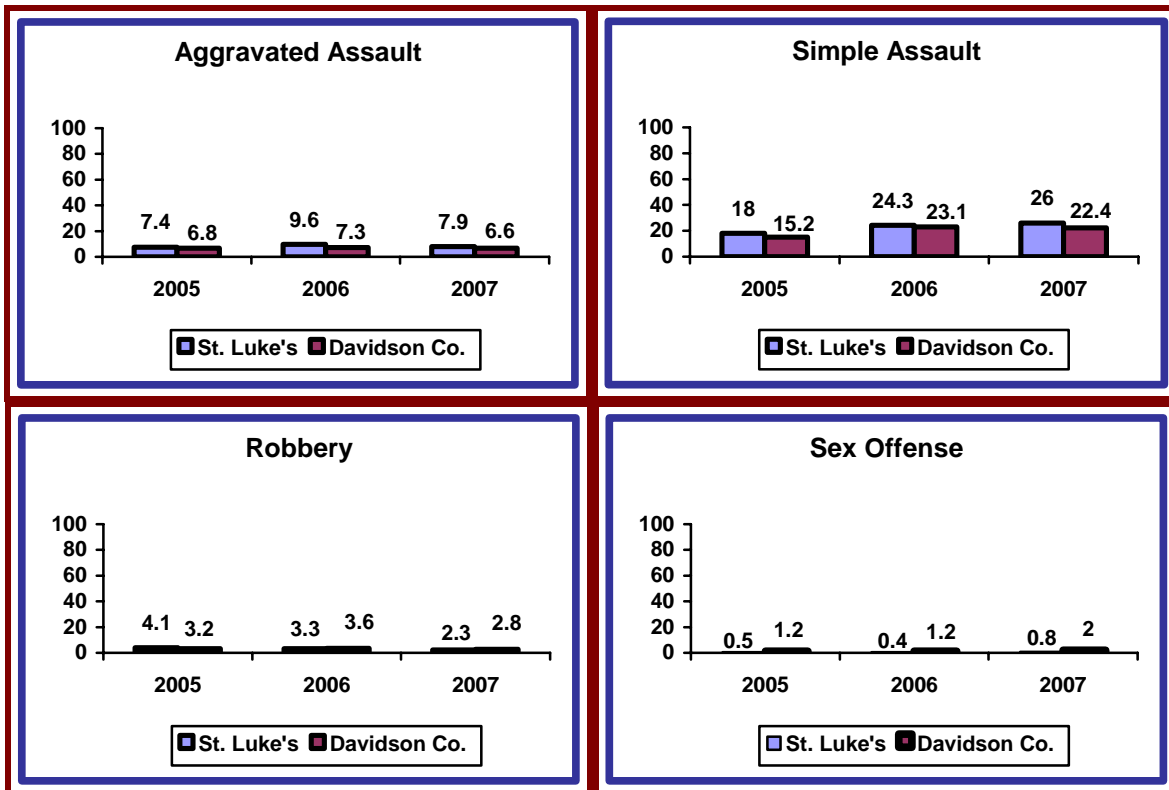
Measure: Crime incidents refer to events in which a crime took place, a victim reported the crime, and an incident report was filed by a police officer.

Description: Crimes against persons include violence against individuals, such as aggravated and simple assault, robbery, and sex offense.

What the data show: Incidents of aggravated assault and robbery declined in 2007 in the St. Luke's area with robbery incidents below those for the county. Incidents of sex offense doubled from 2006 to 2007 although remaining below those for the county for the same period.

Measure implications: Reduction in crime rates is essential to neighborhood safety.

RATES OF CLOSED CRIME INCIDENTS AGAINST PERSONS IN THE ST. LUKE'S AREA 2005-2007



Source: Neighborhoods Resource Center

Goal: Families and Children are Safe

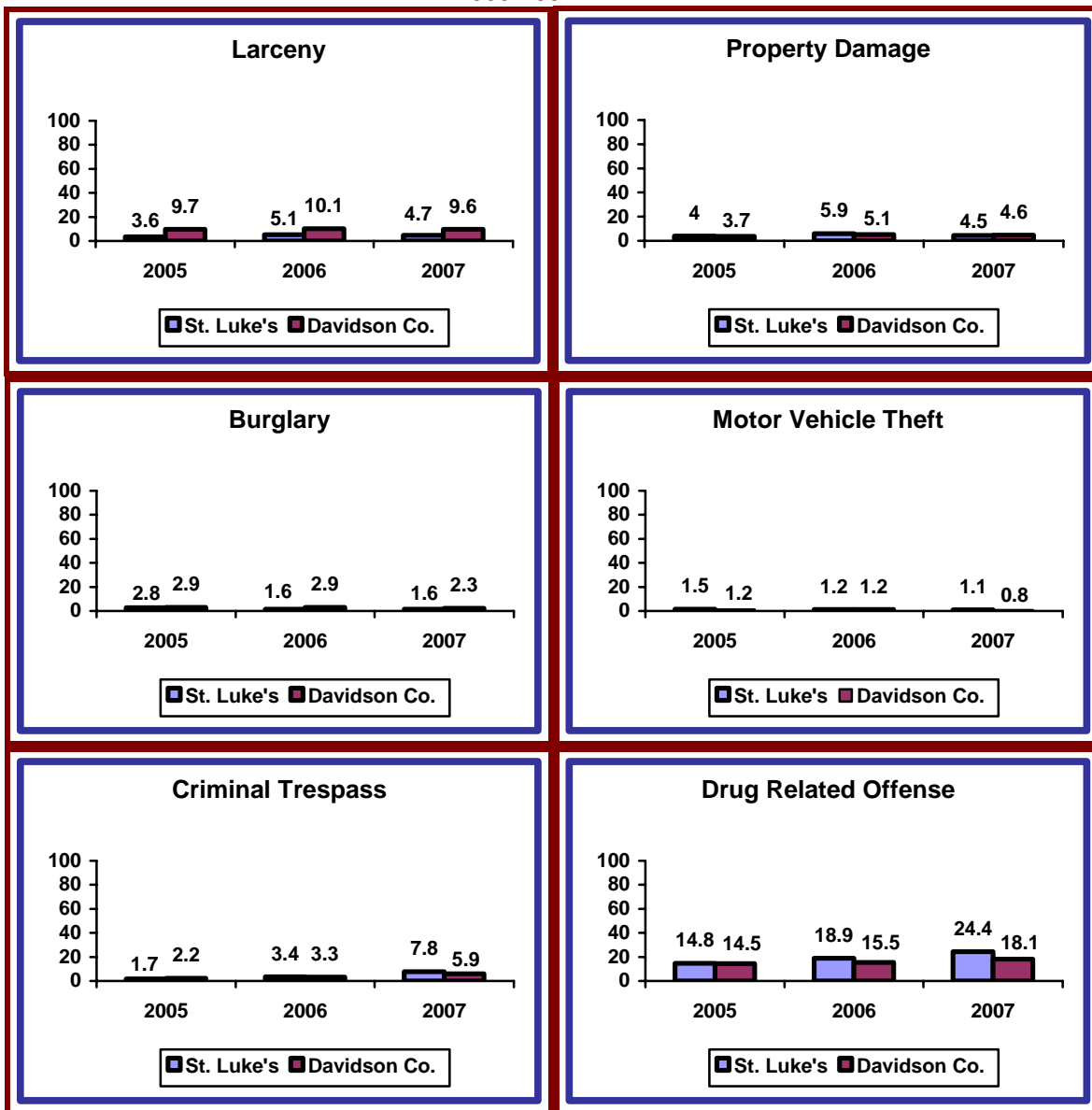
Measure: Crime incidents refer to events in which a crime took place, a victim reported the crime, and an incident report was filed by a police officer.

Description: Property/other crimes include larceny, property damage/vandalism, burglary, motor vehicle theft, harassment/criminal trespass, and drug related offense.

What the data show: St. Luke's area incidents of property/other crime for 2007 declined in all areas criminal trespass and drug related offense; the criminal trespass crimes more than doubled. Crime incidents, however, for larceny, property damage and burglary were below the county rates.

Measure implications: Reduction in crime rates is essential to neighborhood safety.

RATES OF CLOSED CRIME INCIDENTS AGAINST PROPERTY/OTHER IN THE ST. LUKE'S AREA 2005-2007



Source: Neighborhoods Resource Center

Goal: Frail Elderly Live in Supportive Communities

Measure: The percent of type of disability among the 65 years and older population.

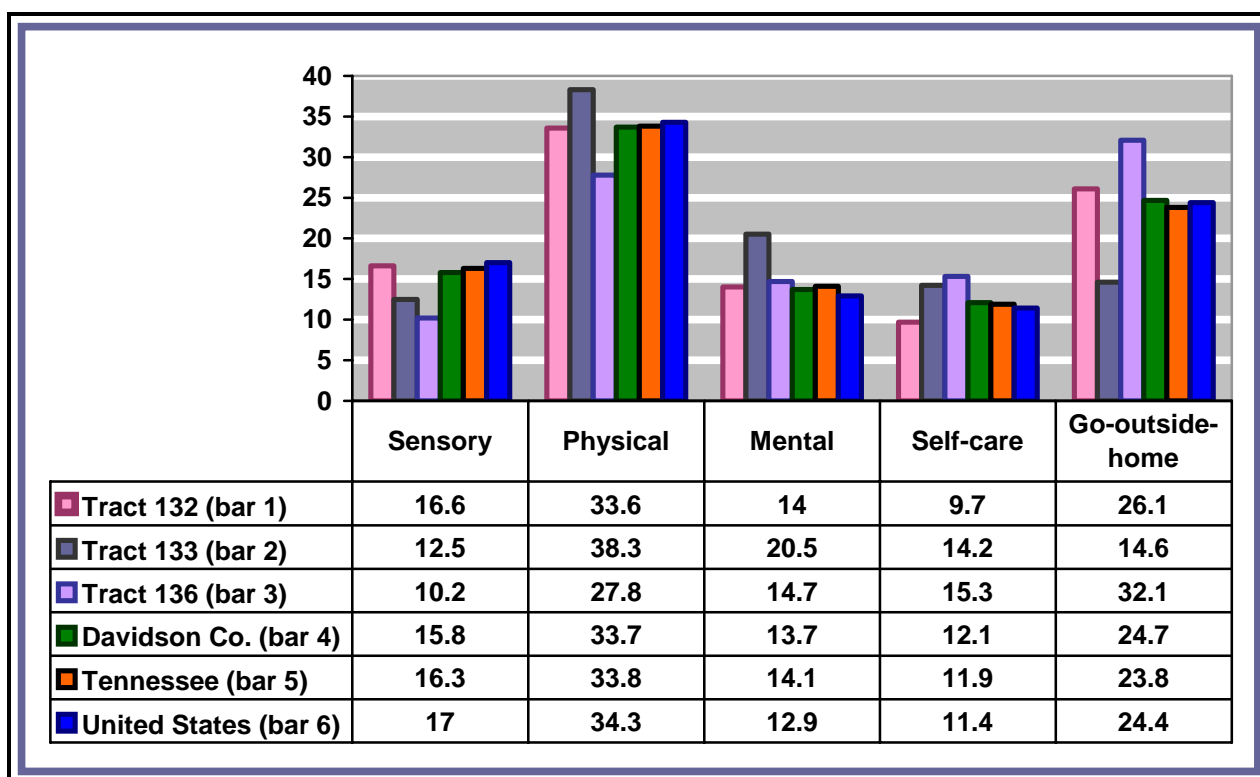
Description: Percents are based on the number of disabilities, rather than the number of people with disabilities. A single person may suffer from multiple disabilities. (See Appendix A for the number and type of disabilities by census tract.)

What the data show: The percent of sensory and go-outside-the-home disabilities in census tract 132 exceeded those for county and state.

Census tract 133 experienced higher percentages of physical, mental, and self-care disabilities than the county, state, and nation. Mental, self-care, and go-outside-the-home disability percentages for census tract 136 exceeded the county, state, and national percentages.

Measure implications: Disabilities hamper the performance of daily living functions, such as bathing, cooking, housekeeping, and shopping, and make it difficult for the elderly to manage independent living.

PERCENTAGES OF TYPES OF DISABILITIES REPORTED AMONG POPULATION 65 YEARS OR OLDER ST. LUKE'S AREA, CENSUS 2000

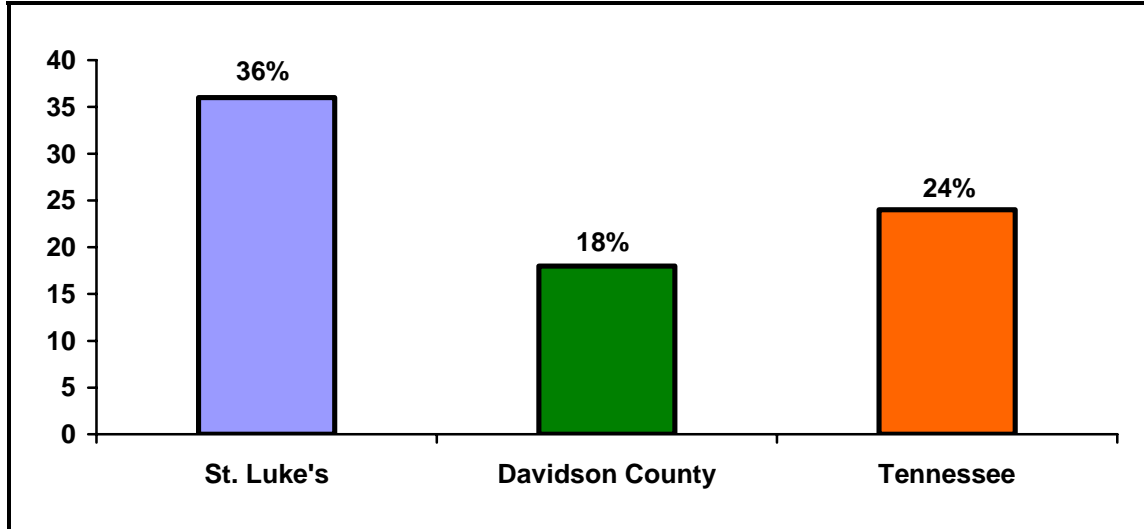


Source: U. S. Census Bureau, Census 2000

Notes: The 1990 and 2000 census' disability data were not comparable. See Appendix for available data that were charted from the 1990 census.

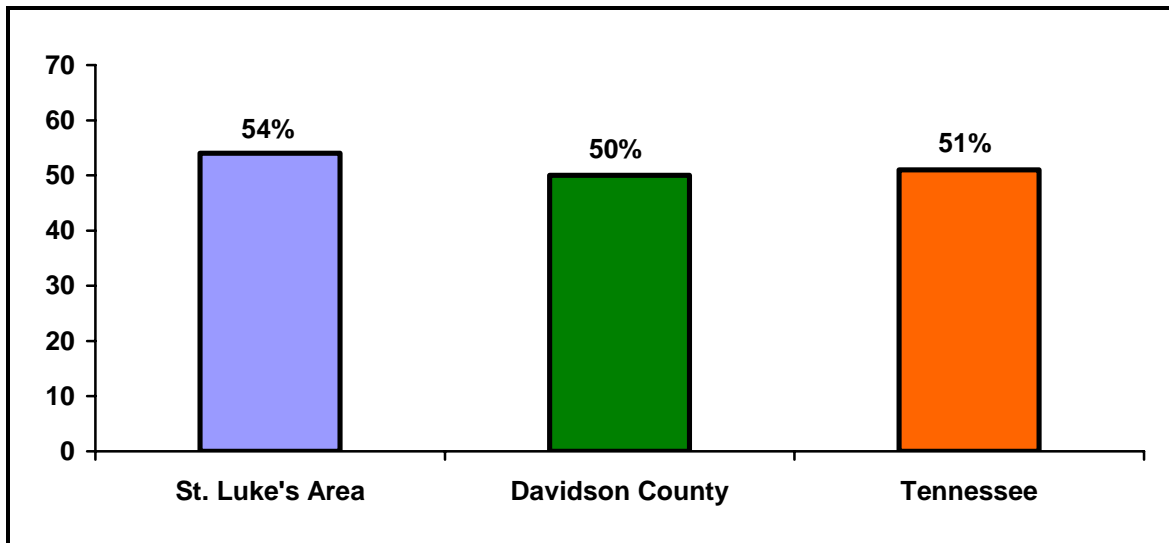
SELECTED DEMOGRAPHICS: The following chart provides demographic information for the St. Luke's FRC service area (census tracts 132, 133, and 136).

PERCENT OF POPULATION AGE 25+ WITH LESS THAN A HIGH SCHOOL DIPLOMA OR GED



Source: U.S. Census Bureau, Census 2000, Summary File 3 (Table DP-2)

PERCENT OF GRANDPARENTS RESPONSIBLE FOR CARE OF GRANDCHILDREN (< AGE 18) RESIDING IN SAME HOUSEHOLD



Source: U.S. Census Bureau, Census 2000, Summary File 3 (Table DP-2)

APPENDIX

Goal: Families and Children are Safe

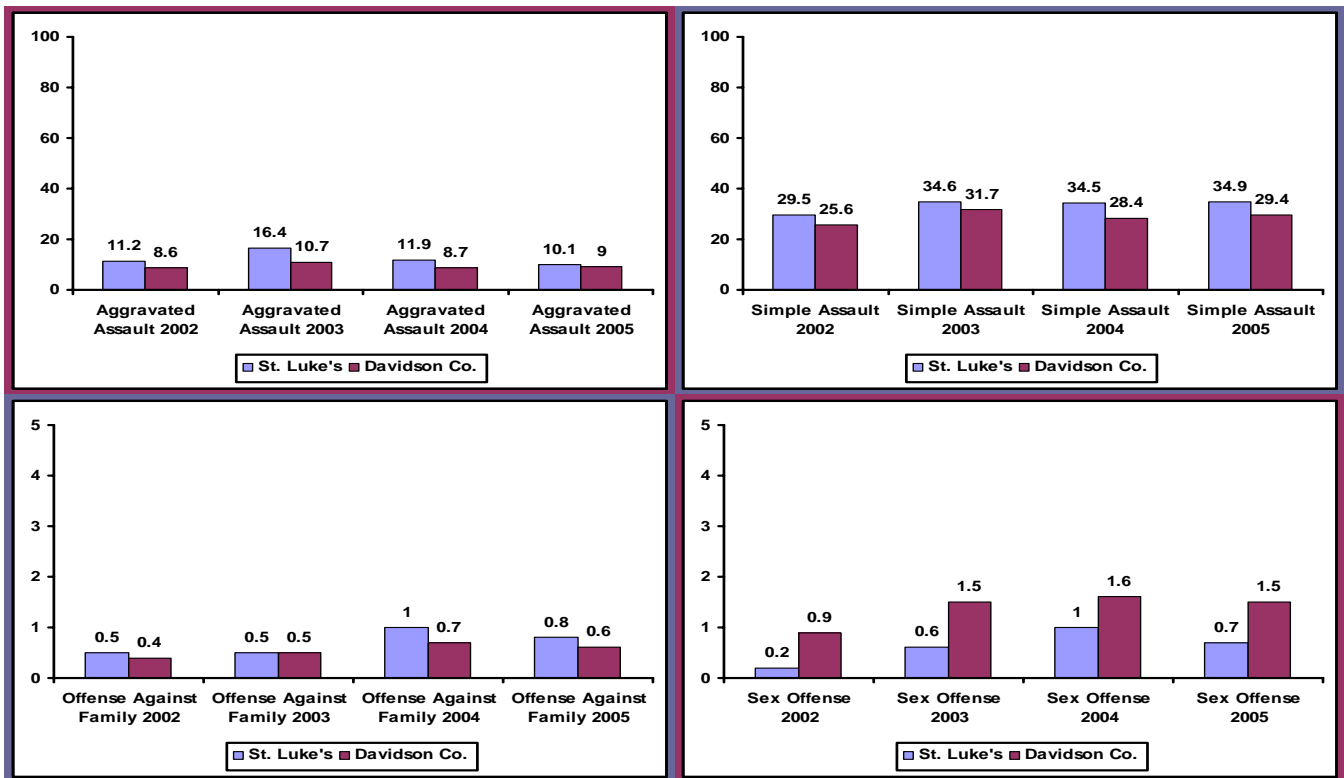
Measure: Rates of reported crimes against persons.

Description: Crimes against persons include violence against individuals, such as aggravated and simple assault, offense against the family, and sex offense. It should be noted that all crimes were the number reported, not necessarily the number that occurred and the same person could have been the victim of one or more crimes.

What the data show: In 2005, with the exception of simple assault rates, reported crimes against persons in the St. Luke's area declined.

Measure implications: Reduction in crime rates is essential to neighborhood safety.

RATES OF REPORTED CRIMES AGAINST PERSONS IN THE ST. LUKE'S AREA, 2002-2005



Source: Neighborhoods Resource Center, 2002 and 2003 FRC data recalculated.

Notes: The rate is the number of crimes per 1,000 persons.

Goal: Families and Children are Safe

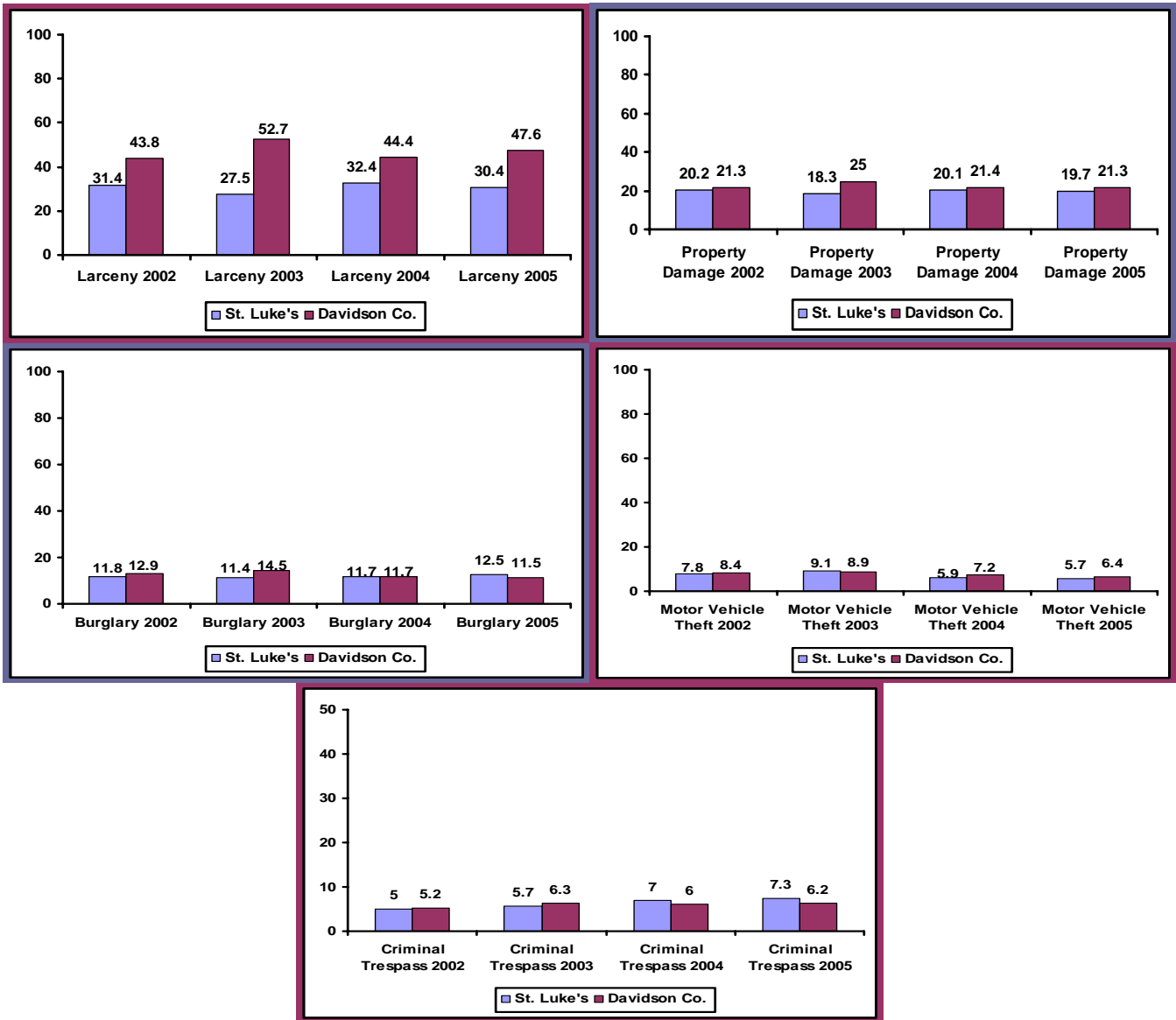
Measure: Rates of reported property crimes.

Description: Property crimes include burglary, harassment/criminal trespass, larceny, motor vehicle theft, and property damage/vandalism. It should be noted that all crimes were the number reported, not necessarily the number that occurred and the same person could have been the victim of one or more crimes.

What the data show: Reported property crimes in the St. Luke's area decreased in larceny, property damage, and motor vehicle theft categories in 2005.

Measure implications: Reduction in crime rates is essential to neighborhood safety.

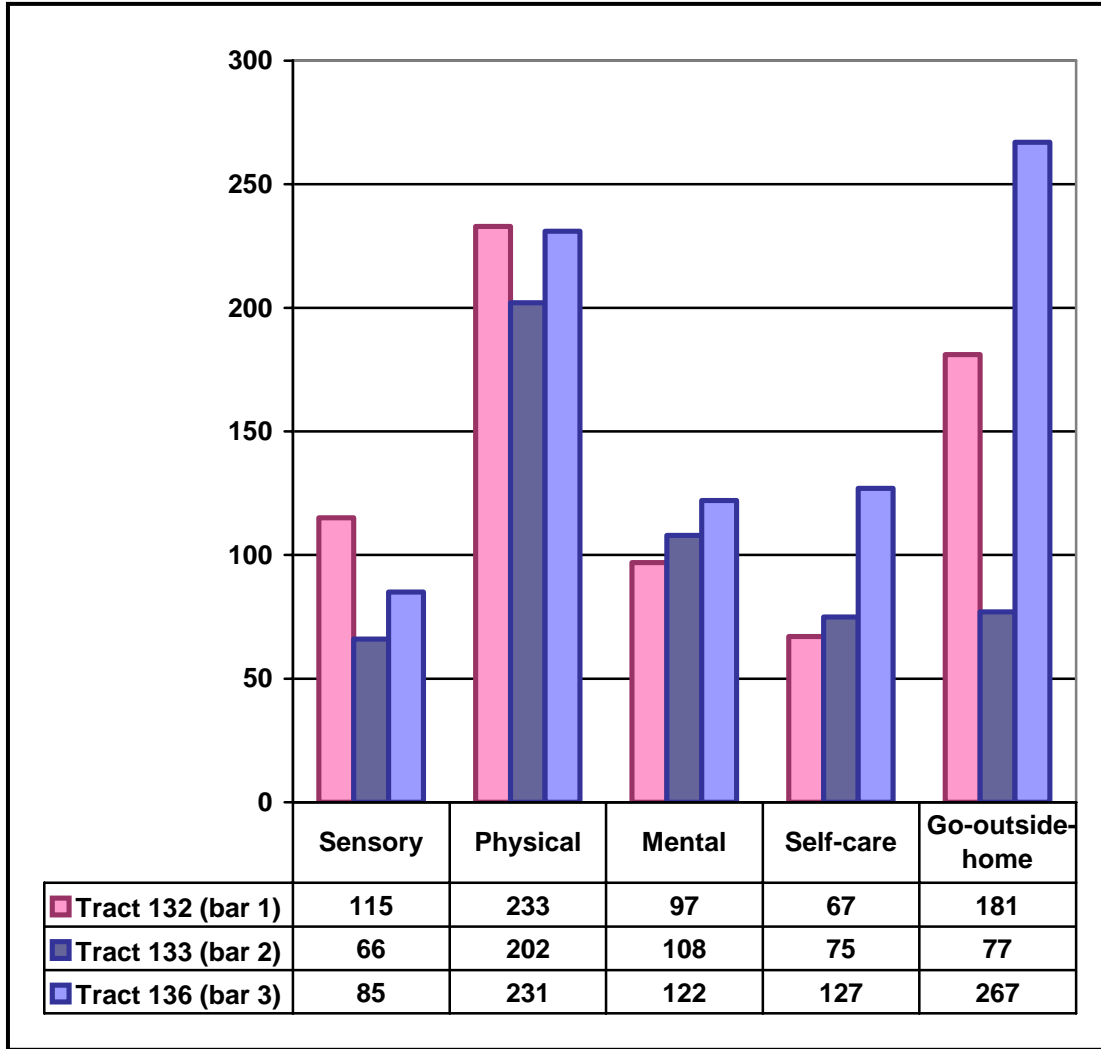
RATES OF REPORTED PROPERTY CRIMES IN THE ST. LUKE'S AREA, 2002-2005



Source: Neighborhoods Resource Center, 2002 and 2003 FRC data recalculated.

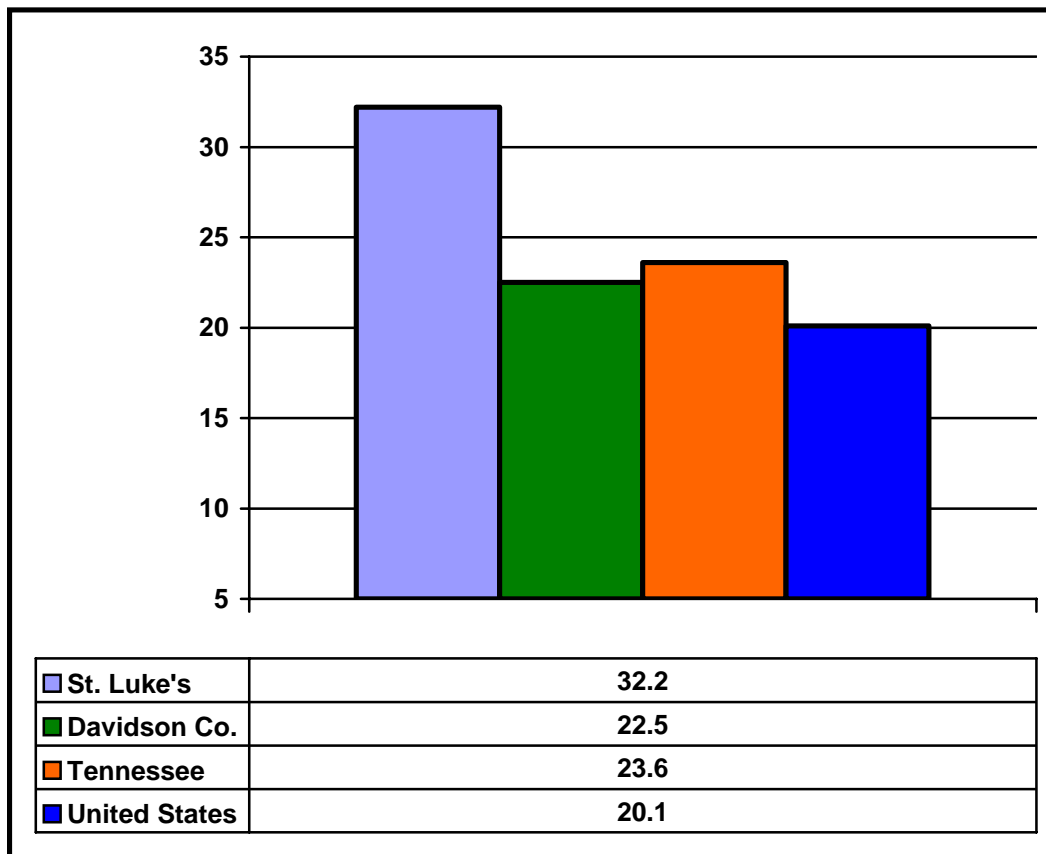
Notes: The rate is the number of crimes per 1,000 persons.

**NUMBERS AND TYPES OF DISABILITIES REPORTED AMONG POPULATION
65 YEARS OR OLDER, ST. LUKE'S AREA, 2000**



Source: U. S. Census Bureau, Census 2000

PERCENT OF ELDERLY WITH MOBILITY AND SELF-CARE LIMITATIONS, 1999



Source: U. S. Census Bureau, Census 1990